



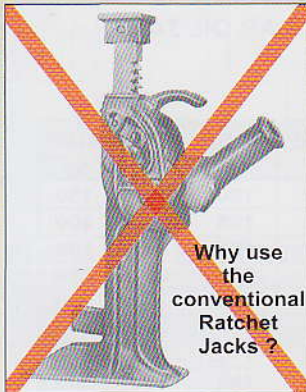
HYDRAULIC TOE JACKS



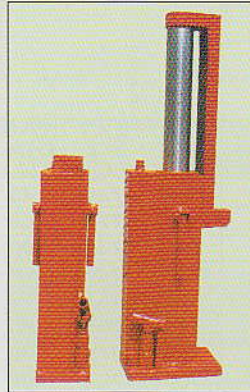
PURPOSE/PROPOSED USE OF PRODUCT :

HEAVY EQUIPMENT MOVERS HAVE LONG REALIZED THE BENEFITS OF VANKOS TOE JACKS. BOTTLE TYPE HYDRAULIC TOE JACKS CAN DO A VARIETY OF JOBS FASTER AND SAFER THAN STANDARD BOTTLE JACKS. VANKOS TOE JACKS ARE THE SOLUTION TO A WIDE VARIETY OF LIFTING PROBLEMS.

DESIGNED FOR LIFTING LOADS WITH VERY LOW CLEARANCES. HEIGHT OF TOE ALLOWS EASIER ACCESS TO LOW HEIGHT APPLICATIONS SUITABLE FOR LIFTING HEAVY MACHINERY AND CARGO IN PLANT MAINTENANCE, BRIDGE CONSTRUCTION, SHIPBUILDING, MINING AND RAILWAY APPLICATIONS.



Why use the conventional Ratchet Jacks ?



LOW HEIGHT TOE JACK

TYPE : SS-TOE-10/50
 CAPACITY IN TONS (ON HEAD) : 10
 CAPACITY IN TONS (ON TOE) : 5
 CLOSED HEIGHT : 158 MM
 HYD. LIFT : 50MM
 EXTENDED HEIGHT : 208 MM



PRODUCT DESCRIPTION :

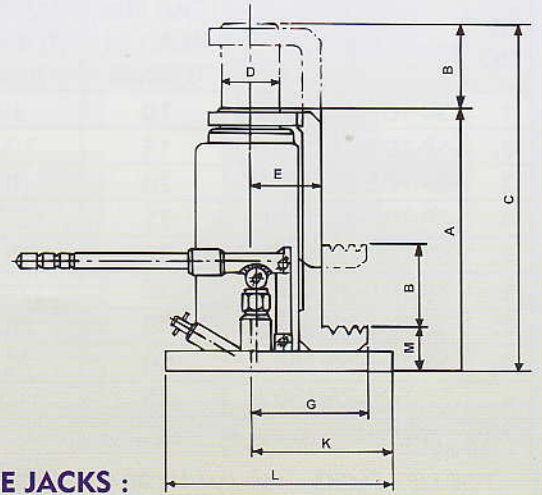
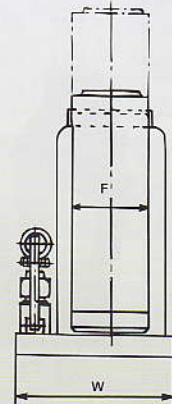
A POWERFUL HEAVY DUTY BOTTLE JACK THAT IS IDEAL FOR LIFTING LOADS WITH VERY LOW CLEARANCES. SELF RETRACTION JACK BY INTERNAL SPRING. WELDED STEEL CONSTRUCTION THROUGHOUT REDUCES METAL FATIGUE ALLOWING FOR A LONGER LIFE AND NO OIL LEAK. VANKOS JACKS ARE LIGHT AND DURABLE.

NEW ROTATING PUMP FOR OPERATION IN ANY DIRECTION (ON REQUEST)



ALSO AVAILABLE :

1. HYDRAULIC REMOTE TOE JACKS
 2. HYDRAULIC THREADED RAM TOE JACKS
- BOTH MODELS AVAILABLE WITH MECHANICAL LOCKING FOR UNLIMITED DURATION LOAD HOLDING ADVANTAGES



FEATURES/ADVANTAGES :

- SELF-RETRACTION OF JACK BY SPRING (FOR PLAIN RAM JACKS)
- WELDED STEEL CONSTRUCTION
- NO OIL LEAK
- COMPACT, POWERFUL AND RUGGED
- HEIGHT OF TOE ALLOWS EASIER ACCESS TO LOW HEIGHT APPLICATIONS.
- LIGHT WEIGHT
- CONTROLLED AND SMOOTH LOWERING OF LOAD.
- 180° PUMP SWIVELS FOR OPERATION IN ANY DIRECTION (IN SELECTED MODELS).
- HARD CHROME PLATED RAM AVAILABLE ON REQUEST.

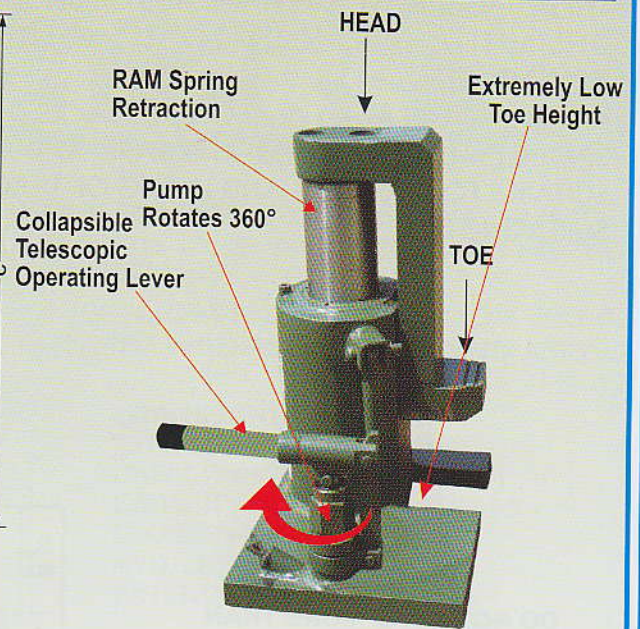
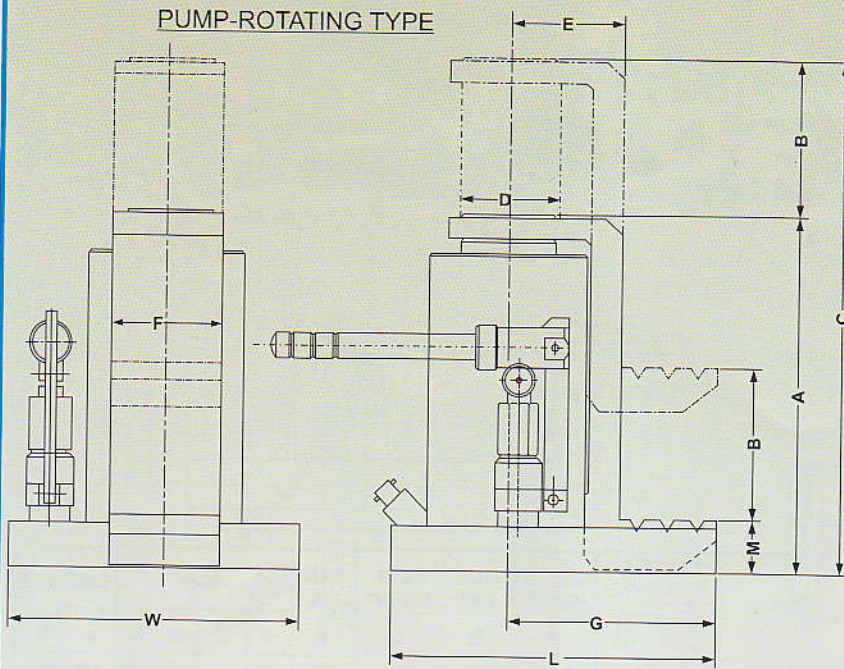
PLAIN RAM TOE JACKS :

SL. NO.	TYPE	CAPACITY IN TONNES		CLOSED HEIGHT	HYD. LIFT	EXT. HT.	RAM DIA.	TOE D	TOE E	TOE F	TOE G	TOE M	BASE K	BASE L	BASE W	BASE SIZE
		ON HEAD	ON TOE	A	B	C	D	E	F	G	M	K	L	W		
1.	SS.TOE-10/150	10	5	258	150	408	43	61	60	96	52	120	180	150		
2.	SS.TOE-15/150	15	7.5	275	150	425	58	71	65	116	56	125	200	200		
3.	SS.TOE-20/150	20	10	285	150	435	60	76	70	126	62	132	200	225		
4.	SS.TOE-25/150	25	12.5	295	150	445	70	89	75	139	64	150	235	210		
5.	SS.TOE-30/150	30	15	303	150	453	76	102	85	152	66	152	240	220		
6.	SS.TOE-35/150	35	17.5	315	150	465	80	105	90	155	70	160	260	240		
7.	SS.TOE-40/150	40	20	325	150	475	90	114	100	164	75	170	280	270		
8.	SS.TOE-50/150	50	25	332	150	482	100	117	130	182	82	195	300	300		
9.	SS.TOE-75/150	75	37.5	360	150	510	110	132	140	182	90	198	340	320		
10.	SS.TOE-100/150	100	50	373	150	523	127	135	160	200	105	207	330	350		

HYDRAULIC POWER FOR ALL APPLICATIONS



NEW MODEL : SSL TOE



PLAIN RAM EXTREMELY LOW HEIGHT TOE JACKS :

SL. NO.	TYPE	CAPACITY IN TONNES		CLOSED HEIGHT A	HYD. LIFT B	EXT. HT. C	RAM DIA. D	TOE E	TOE F	TOE G	TOE M	BASE SIZE	
		ON HEAD	ON TOE									L	W
1.	SSL-TOE-10/150	10	5	258	150	408	43	61	60	96	32	180	210
2.	SSL-TOE-15/150	15	7.5	275	150	425	58	71	65	116	37	200	240
3.	SSL-TOE-20/150	20	10	285	150	435	60	76	70	126	40	225	245
4.	SSL-TOE-25/150	25	12.5	295	150	445	70	89	75	139	42	235	280
5.	SSL-TOE-30/150	30	15	303	150	453	76	102	85	152	42	240	305
6.	SSL-TOE-35/150	35	17.5	315	150	465	80	105	90	155	43	260	330
7.	SSL-TOE-40/150	40	20	325	150	475	90	114	100	164	45	280	370
8.	SSL-TOE-50/150	50	25	332	150	482	100	117	130	182	50	300	430
9.	SSL-TOE-75/150	75	37.5	360	150	510	110	132	140	182	58	320	480
10.	SSL-TOE-100/150	100	50	373	150	523	127	135	160	200	66	330	500

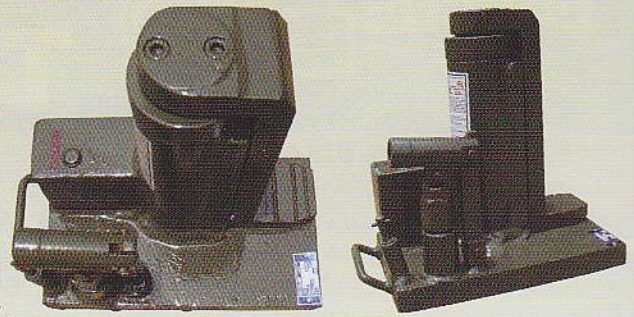
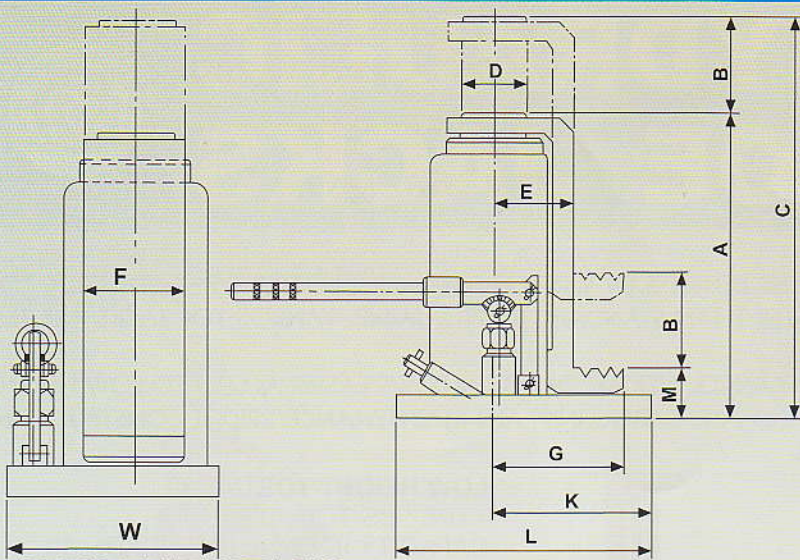


SL. NO.	MODEL	CAPACITY ON TOE	CAPACITY ON HEAD	TOE HEIGHT, M	HYD. LIFT B	CLOSED JACK HEIGHT, A	BASE SIZE L x W
		TONNES	TONNES				
1.	SSL-TOE- 5/10	5	10	32	150	258	180 x 210
2.	SSL-TOE-7.5/15	7.5	15	37	150	275	200 x 240
3.	SSL-TOE- 10/20	10	20	40	150	285	225 x 245
4.	SSL-TOE- 15/30	15	30	42	150	303	240 x 305

SSL-TOE-30/150



SCREW / THREADED RAM TOE JACKS



**SR-TOE-15/150
WITH RECTANGULAR OIL TANK**

PLAIN RAM TOE JACKS :

SL. NO.	TYPE	CAPACITY IN TONNES		CLOSED HEIGHT A	HYD. LIFT B	EXT. HT. C	RAM DIA. D	TOE E	TOE F	TOE G	TOE M	BASE K	BASE SIZE		
		ON HEAD	ON TOE					E	F	G	M	K	L	W	
1.	SS-TOE-10/300	10	5	420	300	720	43	61	60	96	52	120	180	150	
2.	SS-TOE-15/300	15	7.5	425	300	725	58	71	65	116	56	125	200	200	
3.	SS-TOE-20/300	20	10	435	300	735	60	76	70	126	62	132	225	200	
4.	SS-TOE-25/300	25	12.5	445	300	745	70	89	75	139	64	150	235	210	
5.	SS-TOE-30/300	30	15	453	300	753	76	102	85	152	66	152	240	220	
6.	SS-TOE-35/300	35	17.5	465	300	765	80	105	90	155	70	160	260	240	
7.	SS-TOE-40/300	40	20	475	300	775	90	114	100	164	75	170	280	270	
8.	SS-TOE-50/300	50	25	482	300	782	100	117	130	182	82	195	300	300	
9.	SS-TOE-75/300	75	37.5	510	300	810	110	132	140	182	90	198	320	340	
10.	SS-TOE-100/300	100	50	523	300	823	127	135	160	200	105	207	330	350	

**TOE LIFT JACKS - 150 MM HYDRAULIC LIFT
THREADED RAM WITH SAFETY LOCK NUT
CAPACITY ON TOE = 1/2 OF CAPACITY ON HEAD**

SL. NO.	TYPE	CAP. ON HEAD IN TONNES	CAP. ON TOE IN TONNES
1.	SR-TOE-10/150	10	5
2.	SR-TOE-15/150	15	7.5
3.	SR-TOE-20/150	20	10
4.	SR-TOE-25/150	25	12.5
5.	SR-TOE-30/150	30	15
6.	SR-TOE-35/150	35	17.5
7.	SR-TOE-40/150	40	20
8.	SR-TOE-50/150	50	25
9.	SR-TOE-75/150	75	37.5
10.	SR-TOE-100/150	100	50



SR-TOE-40/300

**TOE LIFT JACKS - 300 MM HYDRAULIC LIFT
SCREWED RAM WITH SAFETY LOCK NUT
CAPACITY ON TOE = 1/2 OF CAPACITY ON HEAD**

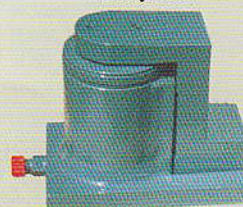
SL. NO.	TYPE	CAP. ON HEAD IN TONNES	CAP. ON TOE IN TONNES
1.	SR-TOE-10/300	10	5
2.	SR-TOE-15/300	15	7.5
3.	SR-TOE-20/300	20	10
4.	SR-TOE-25/300	25	12.5
5.	SR-TOE-30/300	30	15
6.	SR-TOE-35/300	35	17.5
7.	SR-TOE-40/300	40	20
8.	SR-TOE-50/300	50	25
9.	SR-TOE-75/300	75	37.5
10.	SR-TOE-100/300	100	50

**TOE LIFT JACKS - 150 MM HYDRAULIC LIFT
PLAIN RAM COMPRISING OF HYD. UNIT ONLY
(PUMP AND HOSE REQUIRED TO OPERATE JACK)
CAPACITY ON TOE = 1/2 OF CAPACITY ON HEAD**

SL. NO.	TYPE	CAP. ON HEAD IN TONNES	CAP. ON TOE IN TONNES
1.	RC-TOE-10/150	10	5
2.	RC-TOE-15/150	15	7.5
3.	RC-TOE-20/150	20	10
4.	RC-TOE-25/150	25	12.5
5.	RC-TOE-30/150	30	15
6.	RC-TOE-35/150	35	17.5
7.	RC-TOE-50/150	50	25



**DOUBLE ACTING
TOE JACK**



**SINGLE ACTING
TOE JACK**

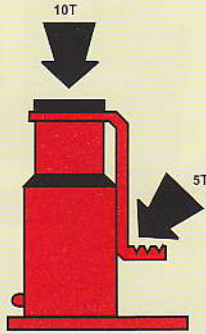
**TOE LIFT JACKS - 300 MM HYDRAULIC LIFT
REMOTE CONTROL TYPE - PLAIN RAM
COMPRISING OF HYD. UNIT ONLY
(PUMP AND HOSE REQUIRED TO OPERATE JACK)
CAPACITY ON TOE = 1/2 OF CAPACITY ON HEAD**

SL. NO.	TYPE	CAP. ON HEAD IN TONNES	CAP. ON TOE IN TONNES
1.	RC-TOE-10/300	10	5
2.	RC-TOE-15/300	15	7.5
3.	RC-TOE-20/300	20	10
4.	RC-TOE-25/300	25	12.5
5.	RC-TOE-30/300	30	15
6.	RC-TOE-35/300	35	17.5
7.	RC-TOE-50/300	50	25

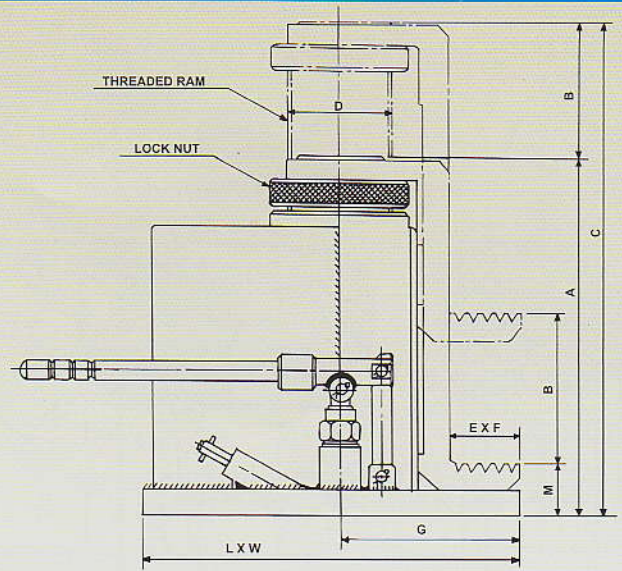
HYDRAULIC THREADED RAM TOE JACKS :

THESE JACKS HAVE MECHANICAL LOCKING FOR UNLIMITED DURATION LOAD HOLDING ADVANTAGES.

VANKOS THREADED RAM TOE JACKS ARE SPECIALLY DESIGNED FOR RAILWAYS AND ARE SUITABLE FOR TAMPING AND LINING OF TRACKS, SURFACING ETC.

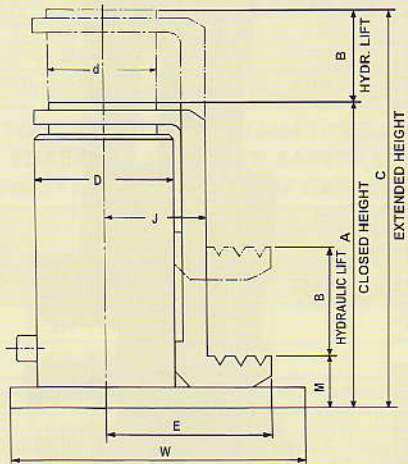


DO NOT LOAD MORE THAN 50% OF THE HEAD CAPACITY ON THE TOE (CLAW) OF JACK.

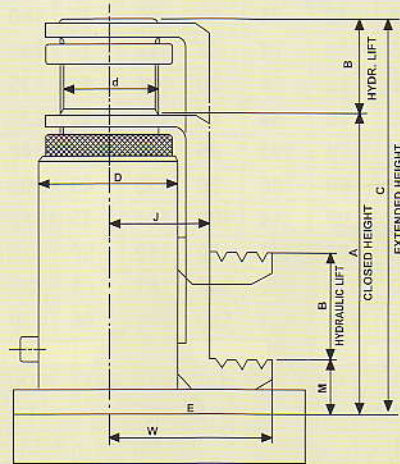


SL. NO.	TYPE	CAPACITY IN TONNES		CLOSED HEIGHT A	HYD. LIFT B	EXTD. HEIGHT C	RAM DIA. D	TOE				BASE SIZE	
		ON HEAD	ON TOE					E	F	G	M	L	W
1	SR-TOE-15/150	15	7.5	305	150	455	58	65	65	136	50	279	158
2	SR-TOE-15/305	15	7.5	558	305	863	58	65	65	136	50	279	158

REMOTE PLAIN RAM TOE JACK



REMOTE THREADED RAM TOE JACK



HYDRAULIC REMOTE TOE JACKS :

THESE JACKS ARE AVAILABLE IN PLAIN AND THREADED RAM MODELS. JACK AND PUMP ARE CONNECTED BY A HOSE AND IT CAN BE USED IN AREAS WHERE OTHER JACKS JUST WON'T FIT AND WHERE IT IS DIFFICULT TO OPERATE.

QUICKEST AND EASIEST WAY TO START WORKING RIGHT AWAY :

ASK FOR READY TO USE SETS, WHICH HAS OPTIMUM MATCH OF INDIVIDUAL COMPONENTS. SETS INCLUDE TOE JACK, PUMP, HOSE, PRESSURE GAUGE WITH ADAPTOR AND QUICK COUPLER.

TECHNICAL SPECIFICATION ON REQUEST

AFTER SALES SERVICE :

VANKOS PROVIDE EXCELLENT AFTER SALES SUPPORT. VANKOS WILL TAKE CARE OF SPARE PARTS AVAILABILITY, SERVICE PERSONNEL AVAILABILITY AND TRAINING IN USE OF PRODUCT.

SPARES AND SERVICES COUNTRY WIDE

- THE MOST INNOVATIVE ENGINEERING STAFF AND HIGHLY SKILLED EXPERIENCED WORK FORCE IN THE COUNTRY WITH SPARES AND SERVICES COUNTRY WIDE.
- VANKOS CAN PROVIDE SOLUTIONS TO THE SPECIAL REQUIREMENTS OF CUSTOMERS. SOME VANKOS TOE JACKS ARE AVAILABLE IN SPECIAL CONFIGURATION NOT LISTED IN THIS CATALOG.

• All Dimensions are in mm unless otherwise stated.

• Designs and Dimensions are subject to alterations for the sake of improvement without notice

• Copyright of this catalog or any part of it is strictly reserved.

OTHER PRODUCTS MANUFACTURED BY VANKOS :

- * CYLINDERS
- * PRESSES
- * LIFTING PLATFORMS
- * HAND PUMPS
- * POWER PACKS
- * NUT SPLITTERS
- * BOLT TENSIONERS
- * CRIMPING TOOLS
- * PULLERS
- * JACKS
- * PIPE BENDERS
- * PORTABLE CRANES
- * PALLET TRUCKS
- * SMALL TRACK MACHINES
- * LOAD CELLS
- * GANG JACKING SYSTEMS
- * TROLLEY JACKS
- * AIR CRAFT JACKS
- * DRUM LIFTER & ROTATOR
- * FLANGE SPREADER
- * BEAD EXTRACTOR
- * ARIEL WORK PLATFORM

MANUFACTURED BY

VANKOS & COMPANY

13/2, INDUSTRIAL ESTATE, PATNA-800013 (INDIA)
PH. : 2262693, 2262455, 2262838, FAX : (0612) 2262902
E-mail : support@vankos.com & marketing@vankos.com

Delhi Office : Vardhaman City-2 Plaza, 309, Commercial Centre Asaf Ali Road, NEW DELHI-110002 (INDIA)
Ph. : 011-42831977, Fax : 011-42831988 • E-mail : vankosdelhi@vankos.com

Mumbai Office : Navjivan Commercial Premises Co-Operative Society Ltd. Building No. 3/706 (L), Lamington Road, Mumbai-400008 (INDIA)
Ph. : 022-65254201, Fax : 022-23090242 • E-mail : vankosmumbai@vankos.com

Bangalore Office : No. 47, R.A.R. Mansion, 2nd Floor, Royan Circle Chamrajpet, 1st Main Road, Bangalore - 560 018 (KARNATAKA) (INDIA)
Ph. : 080-41223132, Fax : 080-26602192, M : 9845205377 • E-mail : vankosbangalore@airtelmail.in

Secundrabad Office : 4-5-1 (Old 2060), 1st Floor, Lala Temple Street, Pan Bazar, Secundrabad-500003
Ph. : 040-64560024 • M : 9030741424 • Telefax : 040-27710024 • E-mail : vankoshyderabad@yahoo.in

WEBSITE : www.vankos.com AND MANY MORE HYDRAULIC EQUIPMENTS CUSTOM MADE TO ORDER.